

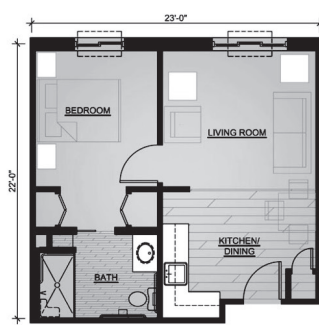


# Now Open in Beaverdale!

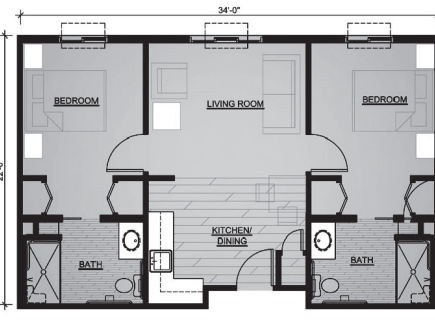
50% OFF YOUR 2<sup>ND</sup> MONTH  
WHEN YOU MENTION THIS AD!



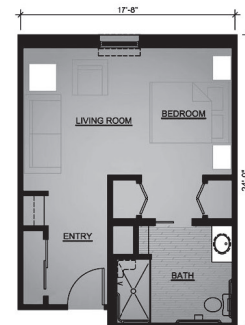
**30** ASSISTED LIVING  
APARTMENTS  
**30** MEMORY CARE  
APARTMENTS



ASSISTED LIVING 1BR



ASSISTED LIVING 2BR



MEMORY CARE STUDIO

AT RIVERWOODS  
2210 E PARK AVE,  
DES MOINES, IA 50320  
PH: 515-288-4040

AT GREEN MEADOWS  
6750 CORPORATE DR  
JOHNSTON, IA 50131  
PH: 515-207-1984

AT SIENA HILLS  
451 SW ANKENY RD  
ANKENY, IA 50021  
PH: 515-776-6325

AT BEAVERDALE  
3410 BEAVER AVE  
DES MOINES, IA 50310  
PH: 515-250-3052

CALL **515-250-3052** OR VISIT US ONLINE AT **WWW.EDENCRESTLIVING.COM**

**WIN A  
3-DAY  
RESPITE  
STAY!**

Bring in this coupon to enter and receive a tour.

Name: \_\_\_\_\_  
Address: \_\_\_\_\_  
City: \_\_\_\_\_ State: \_\_\_\_\_ Zip: \_\_\_\_\_  
Phone: \_\_\_\_\_  
Email: \_\_\_\_\_



AT BEAVERDALE  
3410 BEAVER AVE  
DES MOINES, IA 50310  
PH: 515-250-3052



QUARTERLY NEWSLETTER • WAVELAND PARK NEIGHBORHOOD ASSOCIATION • SPRING ISSUE, MARCH 2018

#### WPNA BOARD OF DIRECTORS

President: Ethan Standard | ethanstandard@gmail.com  
VP: Ben McNamara | memphis@mchsi.com  
Treasurer: Luke Mohlenhoff | lmohlenhoff@yahoo.com  
Secretary: Carole Lunde | carollunde@kw.com  
Mark Johnson | pamejohnson83@gmail.com  
Patrick MacFarland | patrick@frhmappraisal.com  
Rick Osterloh | rickosterloh@gmail.com  
Amy Wilkins | amyw203k@gmail.com

#### ABOUT THE WPNA

The WPNA is a non-partisan non-profit organization in which all meetings, programs, and events are free and open to the public. It is the Purpose of the WPNA to "Enhance and maintain the quality of life in Waveland Park". The WPNA and all activities organized by the association are funded solely by the generosity of its members and business sponsors.

#### MONTHLY MEMBER MEETINGS

The Board of Directors holds meetings on the second Monday of each month at the Franklin Avenue Library, 6:30-7:30 p.m. All meetings are open to the public. Please contact a board member if you would like an item discussed at an upcoming meeting.

#### MEMBERSHIP DUES

Membership in the WPNA is open to the public. Members in good standing are eligible to vote at membership meetings and weigh in on other important decisions that impact the quality of life in our neighborhood. Individual dues are \$15 per year, business dues are \$50 per year, payable by check or via PayPal online at [www.wavelandpark.org](http://www.wavelandpark.org). Annual dues are being collected now!

#### WPNA QUARTERLY NEWSLETTER

The WPNA quarterly newsletter is the official publication of the Waveland Park Neighborhood Association. For questions, comments, or content submissions, contact:

Waveland Park Neighborhood Assoc.  
P.O. Box 30112  
Des Moines, IA 50310

Phone: (515) 650-9060  
Web: [www.wavelandpark.org](http://www.wavelandpark.org)  
Email: [info@wavelandpark.org](mailto:info@wavelandpark.org)  
Twitter: WPNADSM  
Facebook: WPNAbf  
Editor: Kate McGovern  
[katemcgov9212@gmail.com](mailto:katemcgov9212@gmail.com)  
(515) 577-2084

## A LETTER FROM THE WPNA PRESIDENT

### Greetings Neighbors!

My name is Ethan Standard and I am your new Neighborhood Association president for 2018. I am incredibly excited to begin working with our awesome team of board members to continue making our neighborhood a special place to call home.

So far, it's definitely shaping up to be an exciting year for our neighborhood. Your board members are hard at work with the upcoming launch of a new website, new merchandise offerings, and improved events for this summer and fall. Many of you have probably also heard about potential redevelopment projects in the neighborhood near 48th & Franklin. We have been working with the Beaverdale and Merle Hay neighborhood associations to coordinate

our efforts and will be posting updates about public meetings as they become available.

If you don't already, I encourage you to "like" our neighborhood Facebook page so that you can stay in the loop on what's happening in the community. If you have any questions, concerns, or suggestions regarding our neighborhood or you'd like to get involved, please reach out to any of our board members.

I look forward to meeting many of you at our upcoming events throughout the year. Until then, please enjoy the spring weather and all that it brings, namely the return of Snookie's ice cream.

See you soon,  
Ethan Standard  
President, WPNA

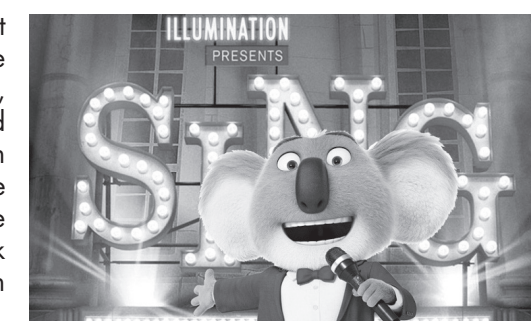
## JOIN THE WPNA FOR THE ANNUAL EASTER EGG HUNT!

It's almost that time of year again! Please join us on Saturday, March 31st for Waveland Park's Annual Easter Egg Hunt at Perkins Elementary School. Don't be late, the sirens go off at 10:00 A.M. and the kids will have scooped up all the eggs by 10:15. It happens so quickly! It's a fun time and you won't want to miss out on this awesome neighborhood tradition. In attendance will be the Easter bunny, the Des Moines Police Department, the Des Moines Fire Department,

tons of neighbors, lots of super fun prizes and a boat load of candy. We owe a lot of thanks to neighborhood volunteers for helping us make this event possible each year, we couldn't do it without the support of our neighbors and neighborhood businesses. This event is open to the public and children ages 10 years old and younger are able to participate. So, bring your baskets/bags, gather in the area appropriate for your children's ages and don't forget to be there early.

## FREE FLICKS - SING! - THURSDAY, JULY 19

Join us for a showing of SING on a 25 foot inflatable screen at the Waveland Golf Course Thursday, July 19. The movie will start at dusk, approximately 9:00 P.M. Admission is free and concessions will be available for purchase from the clubhouse. Additional Free Flicks will be playing every Thursday night throughout the summer at other parks throughout the city. Thank you to the City of Des Moines Parks & Recreation department for sponsoring this unique event!



\*This is not a Des Moines Public Schools publication and is being provided as a courtesy to inform you of other community activities and opportunities available.





Ben Peterson, DDS & Kevin Baker, DDS

Dr. Kevin Baker and Dr. Ben Peterson have combined their practices to form Waveland Family Dental. The doctors and staff are proud to continue to provide the same high-quality, compassionate care in a modern, state-of-the-art facility.

Waveland Family Dental is easily accessible from I-235 and serves patients from all over the greater Des Moines area. New patients are being accepted. Call today to schedule an appointment!

*Modern dentistry with personalized care for the whole family!*

General Dentistry • Cosmetic Dentistry • Implants • Periodontal Treatment  
Dentures • Crowns • Bridges • Oral Surgery • Emergency Care

Waveland Family Dental

4232 University Avenue, Des Moines, IA

515-277-4461 | [www.wavelandfamilydental.com](http://www.wavelandfamilydental.com)

Mon & Wed 7am-7pm

Tue & Thu 7am-5pm

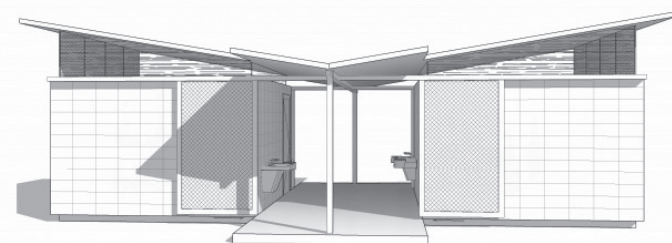
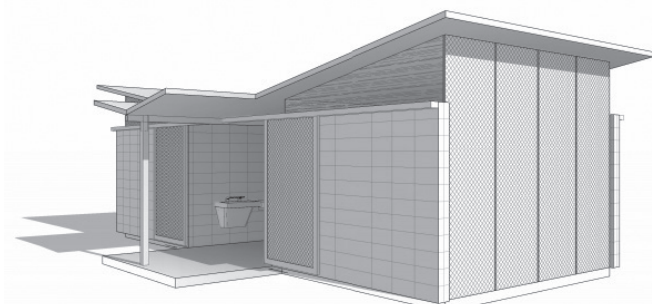
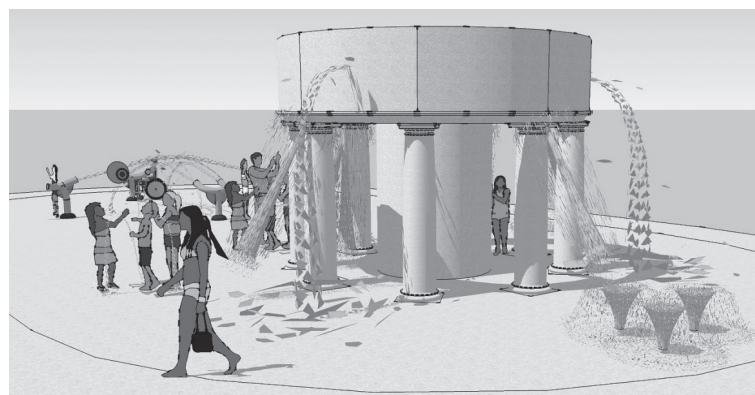
Fri 7am - 12:30pm

## TOWER PARK IMPROVEMENTS

2018 will bring some exciting new changes to Tower Park. Construction will begin this spring on a new "sprayground" and restroom building. A sprayground is a splash pad with spray features that has no standing water. Spraygrounds offer unsupervised water play specifically aimed at children ages 10 and under. City of Des Moines staff is not provided at spraygrounds or fountains, and parental supervision is required. The new sprayground will offer neighborhood kids a safe way to beat the heat without the dangers of drowning. Tower Park will join the ranks of 9 other city parks that have had new spraygrounds installed over the last several years. Construction of the sprayground and restroom building will be completed in the fall of 2018 and open for their first season in the spring of 2019. The current wading pool will remain open for 2018, but will be removed in the fall after the pool season is over.

These images are concepts of what the new sprayground and restroom building could look like, but final design could vary slightly in materials, size, and colors. Photos courtesy of the City of Des Moines.

A miniature replica of the water tower is pictured here as the main feature of the splash pad.



## WAVELAND PARK HISTORIC CHARM



1011 45th Street in Waveland Park is owned by Ann and Bob Gernes, who have lived there since May 1982.

Most of the houses along 45th between Kingman and Chamberlain feature stucco and/or brick exterior cladding, with open (or originally open)

front porches. The first, second, and attic exterior walls of the Gernes house are clad in sprayed-on stucco (gunnite) and the red brick-clad basement raises the house about 30" above ground level. The house has a side-gabled roof with wide, overhanging eaves supported by brackets, windows in sets of three, and a low shed dormer centered on the front roof of the main section of the house. The house's open front porch, with a front-gable roof supported by a pair of Doric columns, is centered on the central axis of the main part of the house. All these features combine to make the house a vernacular, eclectic, builder-style structure with some Prairie/Craftsman influence.

The house has about 2,300sqft of living area, plus a 500sqft finished attic, and 350sqft finished basement. The main floor has a central hall plan featuring lots of original oak. In 1987, the Gerneses put a one-story addition on the rear of the house, designed to resemble an enclosed porch compatible with the original construction. Included in the addition was a garden room, half bath, and pantry closet. They also added shelving, a buffet, and china cabinet based on plans featured in early 1920s home improvement magazines. The second floor has three bedrooms, an enclosed year-round sleeping porch, full bath, and 3/4 bath. In the 1990s, the attic was finished as a fourth bedroom and walk-in closet, plus storage spaces behind the knee walls. A two-car garage designed to resemble the house was also added. In 1990 the Gernes house earned an "Excellence in Historic Preservation" award from the City of Des Moines Historic District Commission for the one-story garden room addition.

The house has had 16 owners since it first appeared in the R. L. Polk Directory in the Des Moines Public Library. It was occupied in 1916 by H. E. Evans, who was Secretary of the Anderson Coal Company, then by Cyril T. and Ethel Carney from 1918 to 1929, at which time Cyril Carney was listed as the Secretary-Treasurer of the Consolidated Coal Co. and VP of the Scandia Coal Co. The Carney family owned several coal mines in Des Moines. Carney Park, near SW 30th and Bell Avenue in Des Moines, is the site of one of the mines.

Ann and Bob gave their house a 100th birthday party the evening of July 23, 2017. About 100 guests attended. The temperature reached 100 degrees that day.

## FRANKLIN COMMUNITY GARDEN

Got a green thumb? Join fellow neighbors and become a member of the Franklin Community Garden. Registration for new gardeners will be opened online on March 1, 2018. New gardeners may rent a single plot their first year. This policy helps ensure new gardeners are able to maintain and care for a single plot before committing to additional garden plots. New applicants are welcome to view the garden maps for openings, visit [www.dmgov.org](http://www.dmgov.org) and search "community gardens" for more information.

## THE INS AND OUTS OF DENTAL INSURANCE

There are many things to consider when considering a dental insurance plan. Generally speaking, group plans, such as those through an employer, are superior to individual plans. Group plans have fewer restrictions on networks, which typically decreases co-pays and deductibles. If you are considering a new plan, whether group or individual, you will want to check the basic plan coverage and network restrictions. Your dentist may not be in network and there may be very few dentists from which to pick from if you are forced to stay in network for coverage. Preventive services include cleanings, exams and x-rays. Minor restorative procedures are fillings and major restorative procedures are crowns and bridges. If you need major restorative procedures, check if there is a waiting period. This means that type of procedure will not be covered for a specified amount of time, typically one year from the start of the plan. Periodontal treatment and dentures are separate categories and will typically have a certain percentage of coverage, such as 50%, also sometimes with a waiting period. If you are interested in implant treatment, this is again a separate category and needs to be looked at closely as many plans do not cover implants at all. With government funded dental care, things are subject to change based on political and funding changes. In general, Medicare does not provide basic dental outpatient coverage. For more information, give our office a call or follow us on Facebook.

-Kevin Baker, DDS, Waveland Family Dental

## GET READY FOR S.C.R.U.B.!

Waveland Park's neighborhood SCRUB event will be held on April 21, 2018 at Hoover High School from 7:00 A.M. to 1:00 P.M. SCRUB stands for Spring Cleanup to Reduce Urban Blight. It is the city's mission to enhance neighborhoods by allowing residents an opportunity to remove yard waste and debris from homes and yards to reduce blighted areas within the City. Large items like furniture, televisions, computers, tires, and air conditioners are all accepted at SCRUB events. Appliances can also be brought to SCRUB events, including refrigerators, microwaves, washers, dryers, and more. Stickers are not required, so this is a great chance to get rid of these items FOR FREE. While SCRUB events are free to citizens of Des Moines, please remember that you must bring a photo id or current utility bill with you on the day of the event as proof of residency. To find a full list of acceptable materials and additional information, please visit [www.dmgov.org](http://www.dmgov.org) and search "SCRUB".

WE'RE CELEBRATING

**10 YEARS**  
AS YOUR FRIENDLY  
NEIGHBORHOOD  
HANDYMEN!  
THANK YOU FOR  
ALLOWING US TO  
SERVE YOU!



- Free Estimates
- 100% Guarantee
- Located in Beaverdale
- Any Household Repairs
- No Job Too Small
- Fully Insured

"WORKING FOR GOD, NOT MAN." COL. 3:23-24

LBC-DSM.COM | 515-279-5310

3623 DOUGLAS AVE., DES MOINES, IA 50310